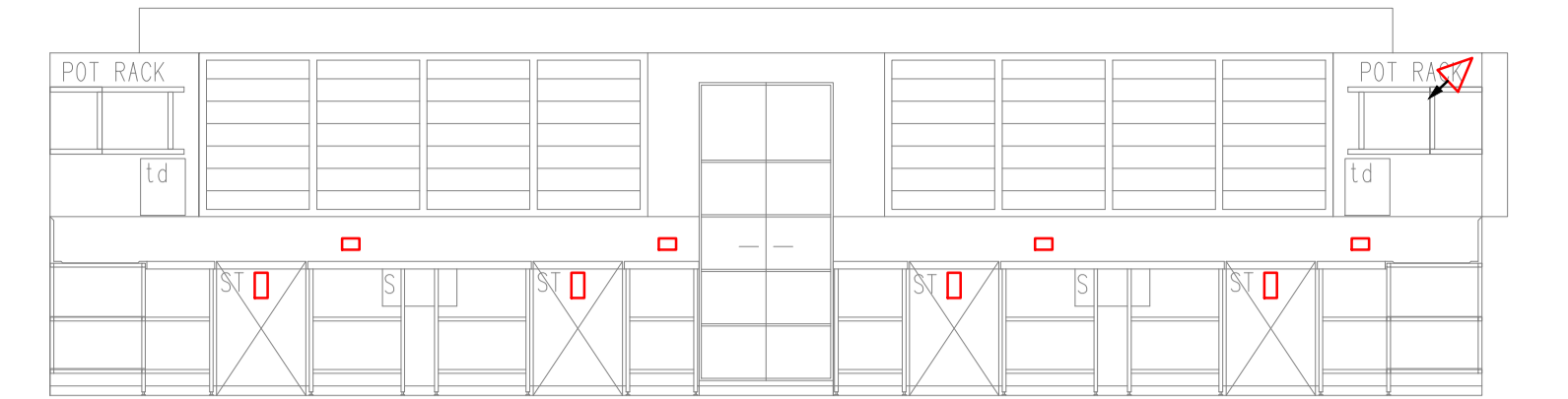
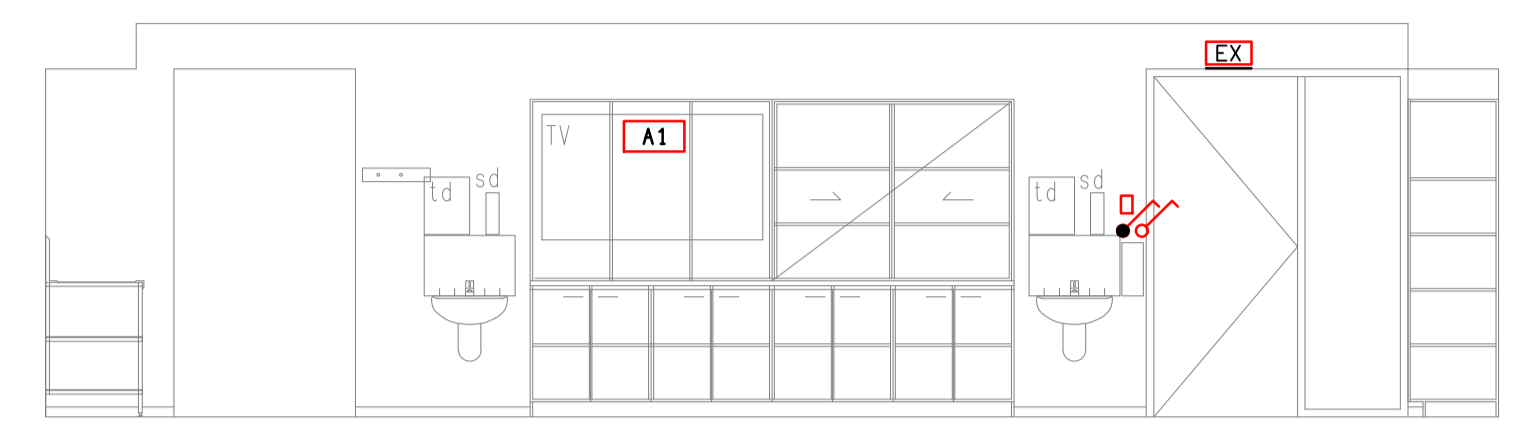


ELEVATION 1
FOOD TECHNOLOGY



ELEVATION 2
FOOD TECHNOLOGY



ELEVATION 4
FOOD TECHNOLOGY



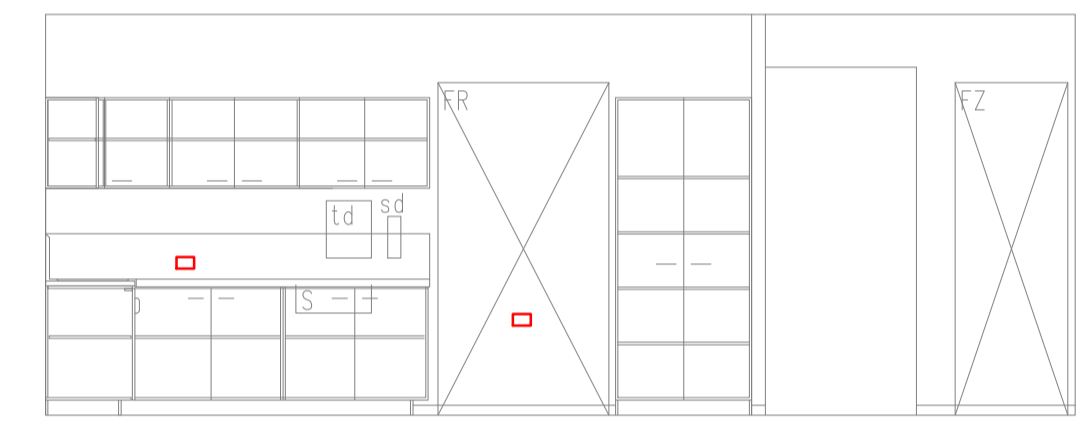
ELEVATION 5
FOOD TECHNOLOGY



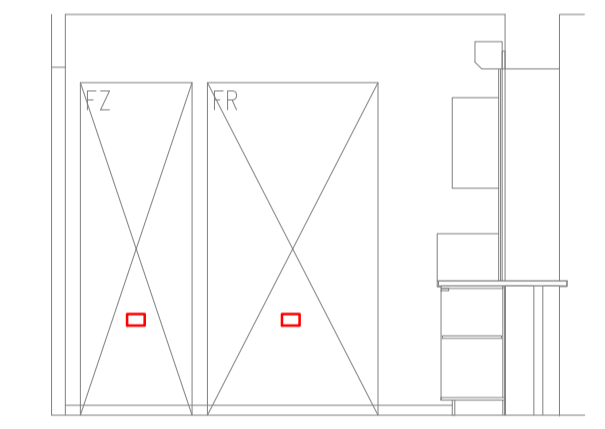
ELEVATION 7
FOOD TECHNOLOGY



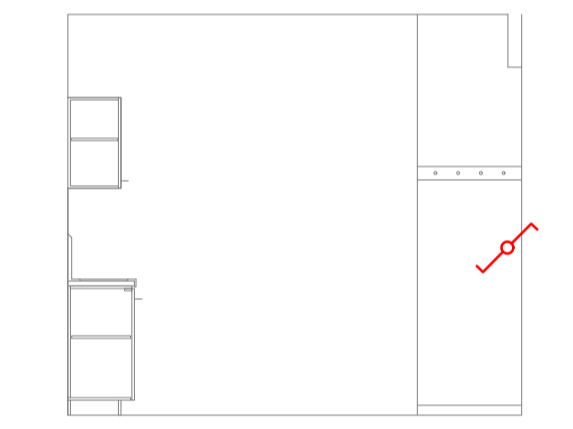
ELEVATION 8
FOOD TECHNOLOGY



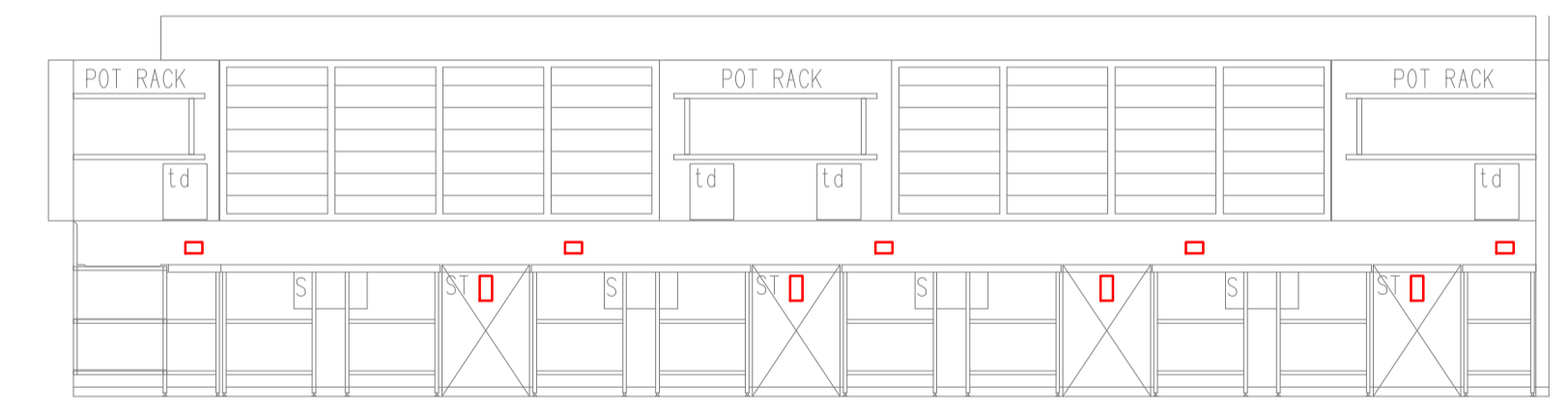
ELEVATION 11
STORE



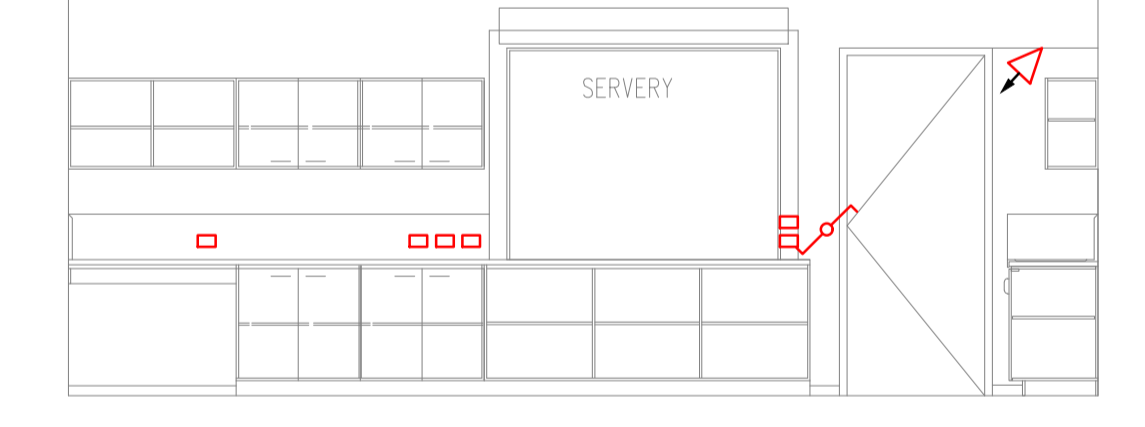
ELEVATION 12
STORE



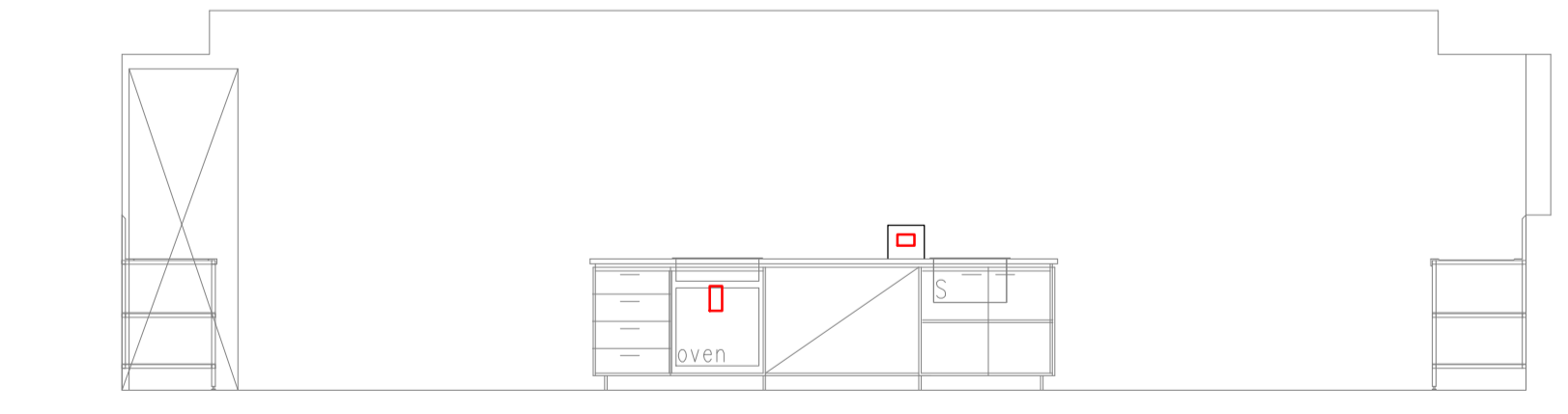
ELEVATION 13
STORE



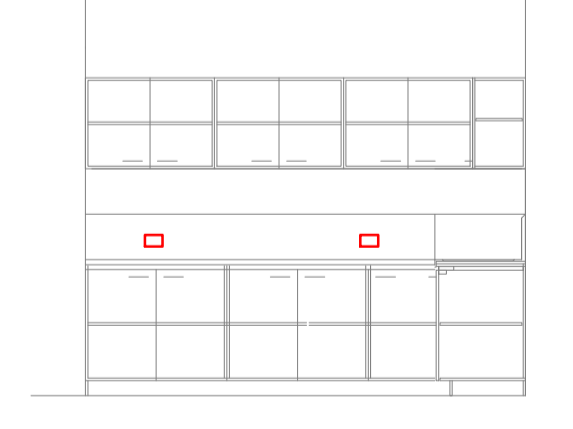
ELEVATION 3
FOOD TECHNOLOGY



ELEVATION 9
STORE



ELEVATION 6
FOOD TECHNOLOGY



ELEVATION 10
STORE

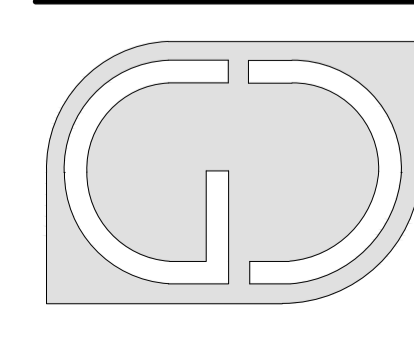
REV	DATE	DESCRIPTION
B	20/09/2023	PRELIMINARY

ELECTRICAL DESIGN GROUP
ELECTRICAL BUILDING SERVICES CONSULTANTS
BRISBANE
P.O. Box 15, Sherwood Q. 4075
Phone: (07) 3278 4375
Email: brisbane@edg.net.au
Web: www.edg.net.au
GOLD COAST

CLIENT
THE ROMAN CATHOLIC TRUST CORPORATION FOR THE DIOCESE OF TOWNSVILLE

PROJECT
**ST ANTHONYS CATHOLIC COLLEGE, DEERAGUN
FOOD TECHNOLOGY CENTRE
CORNER JOANNE STREET & VEALES ROAD**

DRAWING TITLE
ELECTRICAL SERVICES FLOOR PLAN



G+D GROUP (QLD)
Level 3 Toowong Terraces
31 Sherwood Road Toowong Q 4066
T (07) 3870 3722
F (07) 3870 3822
E admin@gdgroupqld.com.au

DATE	SCALE	AT
	1:50	A1

C3042a
EDG PROJECT No.
E03 B
EDG DWG No. REV